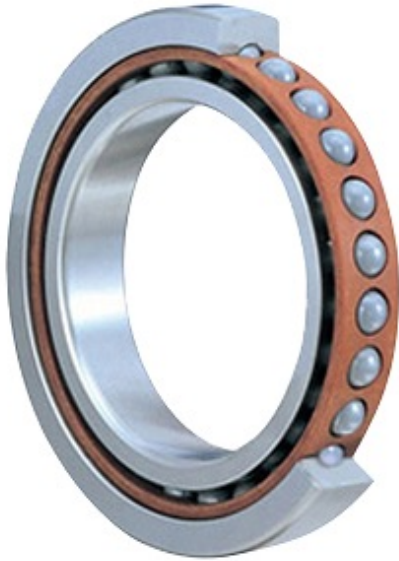




## Precision accessories MFG.CORP



EE 2 TN9 Bearing 2D drawings and 3D CAD models

### 6.35 mm x 19.05 mm x 5.556 mm SKF EE 2 TN9 Single Row Ball Bearings

Bearing No. EE 2 TN9

Category	Single Row Ball Bearings
Inventory	0.0
Manufacturer Name	SKF
Minimum Buy Quantity	N/A
Weight	0.007
Product Group	B00308
Enclosure	Open
Precision Class	ABEC 1   ISO P0
Maximum Capacity / Filling Slot	No
Rolling Element	Ball Bearing
Snap Ring	No
Internal Special Features	No
Cage Material	Polyamide
Internal Clearance	C0-Medium
Inch - Metric	Inch
Long Description	1/4" Bore; 3/4" Outside Diameter; 7/32" Outer Race Width; Open; Ball Bearing; ABEC 1   ISO P0; No Filling Slot; No Snap Ring; No Internal Special Features; C0-Medium Internal Clearance;
Other Features	Deep Groove   Extra Light Duty   Miniature Bearing
Category	Single Row Ball Bearing
UNSPSC	31171504



## Precision accessories MFG.CORP

Harmonized Tariff Code	8482.10.50.68
Noun	Bearing
Keyword String	Ball
Manufacturer URL	<a href="http://www.skf.com">http://www.skf.com</a>
Weight / LBS	0.0165
Inner Race Width	0 Inch   0 Millimeter
Outer Race Width	0.219 Inch   5.563 Millimeter
d	0.25 Inch   6.35 Millimeter
D	0.75 Inch   19.05 Millimeter
d	6.35 mm
D	19.05 mm
B	5.556 mm
d <sub>1</sub>	9.85 mm
D <sub>1</sub>	15.55 mm
r <sub>1,2</sub> min.	0.4 mm
d <sub>a</sub> min.	8.6 mm
D <sub>a</sub> max.	16.8 mm
r <sub>a</sub> max.	0.4 mm
Basic dynamic load rating C	2.81 kN
Basic static load rating C <sub>0</sub>	1.08 kN
Fatigue load limit P <sub>u</sub>	0.045 kN
Reference speed	70000 r/min
Limiting speed	50000 r/min
Calculation factor k <sub>r</sub>	0.025
Calculation factor f <sub>0</sub>	13
Mass bearing	0.0075 kg