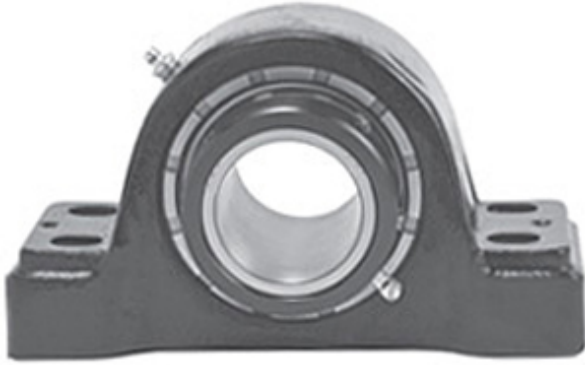




## Precision accessories MFG.CORP

1.938 Inch | 49.225 Millimeter x 3.125 Inch |  
79.38 Millimeter x 2.25 Inch | 57.15 Millimeter  
LINK BELT PKB22431FH Pillow Block Bearings



PKB22431FH Bearing 2D drawings and 3D CAD models

Bearing No. PKB22431FH

Category	Pillow Block Bearings
Inventory	0.0
Manufacturer Name	REXNORD
Minimum Buy Quantity	N/A
Weight	5.9
EAN	0662327114336
Product Group	M06288
Number of Mounting Holes	4
Mounting Method	Concentric Collar
Housing Style	4 Bolt Pillow Block
Rolling Element	Spherical Roller Bearing
Housing Material	Cast Steel
Expansion / Non-expansion	Non-expansion
Mounting Bolts	1/2 Inch
Relubricatable	Yes
Insert Part Number	B22431HL
Seals	Floating Labyrinth
Housing Configuration	1 Piece Solid
Inch - Metric	Inch
Other Features	Double Row   Single Collar   Extended Inner Race   With Set Screw
Long Description	4 Bolt Pillow Block; 1-15/16" Bore; 2-1/4" Base to Center Height; Concentric Collar Mount;



## Precision accessories MFG.CORP

	Spherical Roller Bearing; Relubricatable; Cast Steel; Floating Labyrinth; Non- expansion
Category	Pillow Block
UNSPSC	31171511
Harmonized Tariff Code	8483.20.40.80
Noun	Bearing
Keyword String	Pillow Block
Manufacturer URL	<a href="http://www.rexnord.com">http://www.rexnord.com</a>
Manufacturer Item Number	PKB22431FH
Manufacturer Internal Number	5811433
Weight / LBS	13
Bolt Spacing Maximum	0 Inch   0Millimeter
Actual Bolt Center to Center	6.3 Inch   159Millimeter
B	2.25 Inch   57.15 Millimeter
Nominal Bolt Center to Center	6.3 Inch   160 Millimeter
D	3.125 Inch   79.38 Millimeter
Bolt Spacing Minimum	0 Inch   0Millimeter
d	1.938 Inch   49.225 Millimeter