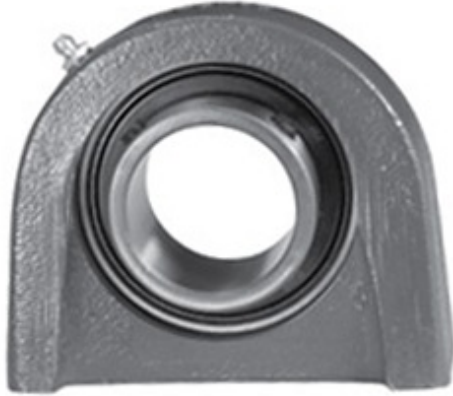




Precision accessories MFG.CORP



0.5 Inch | 12.7 Millimeter x 0.984 Inch | 25
Millimeter x 1.313 Inch | 33.35 Millimeter LINK
BELT PT3S2B08E Pillow Block Bearings

Bearing No. PT3S2B08E

PT3S2B08E Bearing 2D drawings and 3D CAD models

Category	Pillow Block Bearings
Inventory	0.0
Manufacturer Name	REXNORD
Minimum Buy Quantity	N/A
Weight	0.481
EAN	0662864009539
Product Group	M06110
Number of Mounting Holes	2
Mounting Method	Set Screw
Housing Style	2 Bolt Tap Base Pillow Block
Rolling Element	Ball Bearing
Housing Material	Cast Iron
Expansion / Non-expansion	Non-expansion
Mounting Bolts	3/8 Inch
Relubricatable	Yes
Insert Part Number	MB25-12-PA
Seals	Single Lip Contact
Housing Configuration	1 Piece Solid
Inch - Metric	Inch
Other Features	Single Row Standard Duty Has Flinger
Long Description	2 Bolt Tap Base Pillow Block; 1/2" Bore; 1-5/16" Base to Center Height; Set Screw Mount; Ball Bearing; Relubricatable; Cast Iron;



Precision accessories MFG.CORP

	Single Lip Contact; Non-expansion
Category	Pillow Block
UNSPSC	31171511
Harmonized Tariff Code	8483.20.40.40
Noun	Bearing
Keyword String	Pillow Block
Manufacturer URL	http://www.rexnord.com
Manufacturer Item Number	TBC25-12
Manufacturer Internal Number	5803939
Weight / LBS	1.06
d	0.5 Inch 12.7 Millimeter
Nominal Bolt Center to Center	2 Inch 52 Millimeter
Bolt Spacing Minimum	0 Inch 0Millimeter
D	0.984 Inch 25 Millimeter
B	1.313 Inch 33.35 Millimeter
Bolt Spacing Maximum	0 Inch 0Millimeter
Actual Bolt Center to Center	2 Inch 52Millimeter