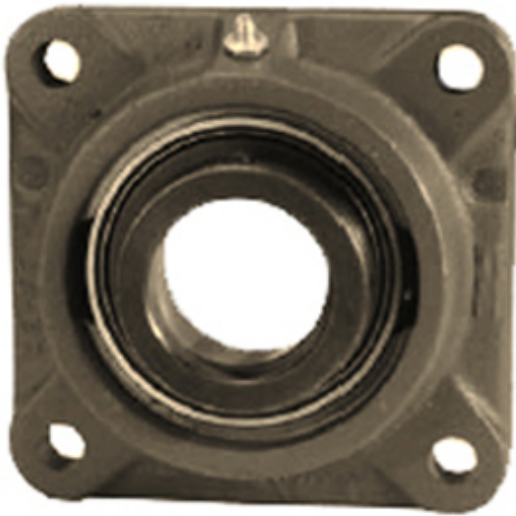




Precision accessories MFG.CORP

LINK BELT FEB22455E7 Flange Block Bearings



Bearing No. FEB22455E7

FEB22455E7 Bearing 2D drawings and 3D CAD models

Category	Flange Block Bearings
Inventory	0.0
Manufacturer Name	REXNORD
Minimum Buy Quantity	N/A
Weight	17.71
EAN	0793699540185
Product Group	M06288
Number of Mounting Holes	4
Mounting Method	Concentric Collar
Housing Style	4 Bolt Square Flange Block
Rolling Element	Spherical Roller Bearing
Housing Material	Cast Iron
Expansion / Non-expansion	Expansion
Mounting Bolts	3/4 Inch
Relubricatable	Yes
Insert Part Number	B22455E7L
Seals	Triple Lip Contact
Housing Configuration	1 Piece Solid
Pilot Configuration	No Pilot
Inch - Metric	Inch
Long Description	4 Bolt Square Flange Block; 3-7/16" Bore; 9-1/2" Bolt Circle; 6-23/32" Bolt Spacing; 1 Piece Solid; Concentric Collar Mount; Cast Iron; Spherical Roller Bearing; 4-3/8" Length Thru
Other Features	Double Row Single Collar



Precision accessories MFG.CORP

	Extended Inner Race With Set Screw
Category	Flange Block
UNSPSC	31171501
Harmonized Tariff Code	8483.20.40.80
Noun	Bearing
Keyword String	Flanged
Manufacturer URL	http://www.rexnord.com
Manufacturer Item Number	FEB22455E7
Manufacturer Internal Number	0154018
Weight / LBS	39
Cartridge Pilot Diameter	0 Inch 0 Millimeter
d	3.438 Inch 87.325 Millimeter
Cartridge Pilot Depth	0 Inch 0 Millimeter
Nominal Bolt Circle Diameter Round	9.5 Inch 241 Millimeter
D	4.375 Inch 111.12 Millimeter
Bolt Spacing	6.719 Inch 170.663 Millimeter