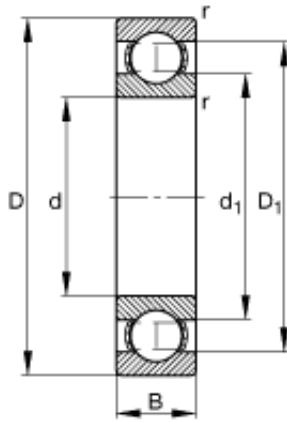




Precision accessories MFG.CORP



300 mm x 460 mm x 74 mm FAG 6060-M Single Row Ball Bearings

Bearing No. 6060-M

Size	300x460x74 mm
Bore Diameter	300 mm
Outer Diameter	460 mm
Width	74 mm
d	300 mm
D	460 mm
B	74 mm
D_1	410,8 mm
$D_{a \max}$	445,4 mm
d_1	350,8 mm
$d_{a \min}$	314,6 mm
$r_{a \max}$	3 mm
r_{\min}	4 mm
m	44,5 kg / Weight
C_r	365000 N / Dynamic load rating (radial)
C_{0r}	520000 N / Static load rating (radial)
n_G	2370 1/min / Limiting speed
n_B	1930 1/min / Reference speed
C_{ur}	16700 N / Fatigue limit load, radial

6060-M Bearing 2D drawings and 3D CAD models