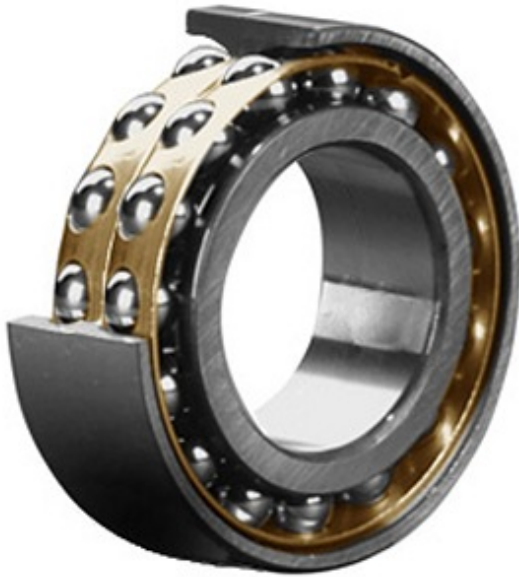




## Precision accessories MFG.CORP



4.331 Inch | 110 Millimeter x 7.874 Inch | 200  
Millimeter x 2.748 Inch | 69.8 Millimeter  
**CONSOLIDATED BEARING 5222 M C/3**  
Angular Contact Ball Bearings

Bearing No. 5222 M C/3

5222 M C/3 Bearing 2D drawings and 3D CAD models

Category	Angular Contact Ball Bearings
Inventory	0.0
Manufacturer Name	CONSOLIDATED BEARING
Minimum Buy Quantity	N/A
Weight	8.68
EAN	0644075118071
Product Group	B00152
Enclosure	Open
Flush Ground	No
Rolling Element	Ball Bearing
Number of Rows of Balls	Double Row
Precision Class	ABEC 1   ISO P0
Maximum Capacity / Filling Slot	Yes
Snap Ring	No
Cage Material	Bronze
Contact Angle	35 degree
Internal Clearance	C3-Loose
Number of Bearings	1 (Single)
Inch - Metric	Metric
Long Description	110MM Bore; 200MM Outside Diameter; 69.8MM Width; Open; No Flush Ground; Ball Bearing;



## Precision accessories MFG.CORP

	Double Row of Balls; ABEC 1   ISO P0; Yes Filling Slot; No Snap Ring
Category	Angular Contact Ball Bearing
UNSPSC	31171531
Harmonized Tariff Code	8482.10.50.28
Noun	Bearing
Keyword String	Angular Contact
Manufacturer URL	<a href="http://www.consbrgs.com">http://www.consbrgs.com</a>
Manufacturer Item Number	5222 M C/3
Weight / LBS	19.114
D	7.874 Inch   200 Millimeter
d	4.331 Inch   110 Millimeter
B	2.748 Inch   69.8 Millimeter